

MOTNJE DIHANJA

UROŠ MEZEG DR. DENT. MED



Kako zobozdravnik lahko pomaga pacientom z motnjami dihanja

Oglejmo si na primeru pacienta:

Uroš N.

Starost 50 let

Teža 128 kg

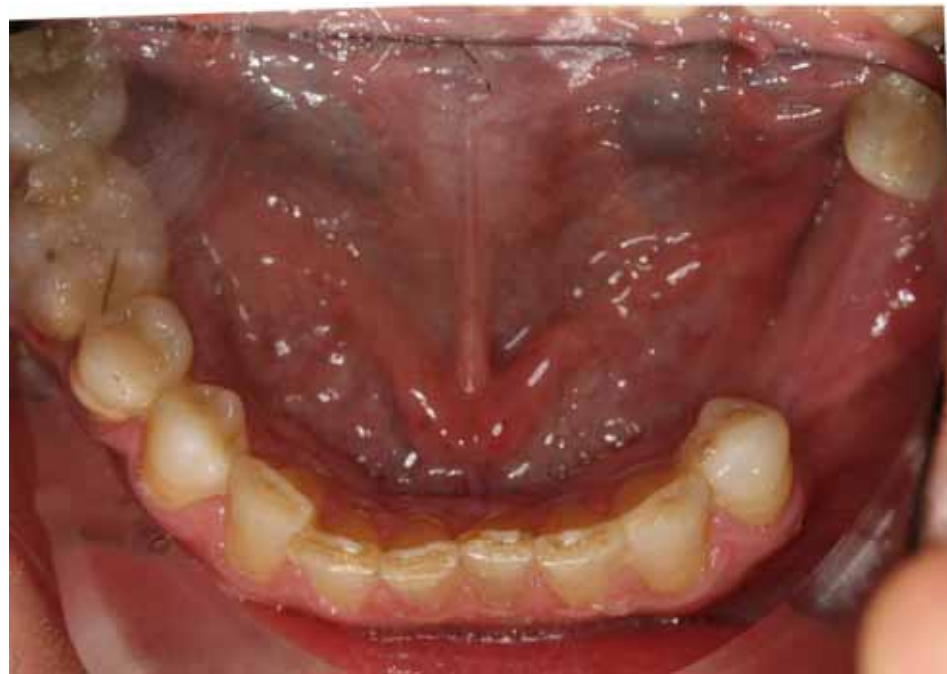
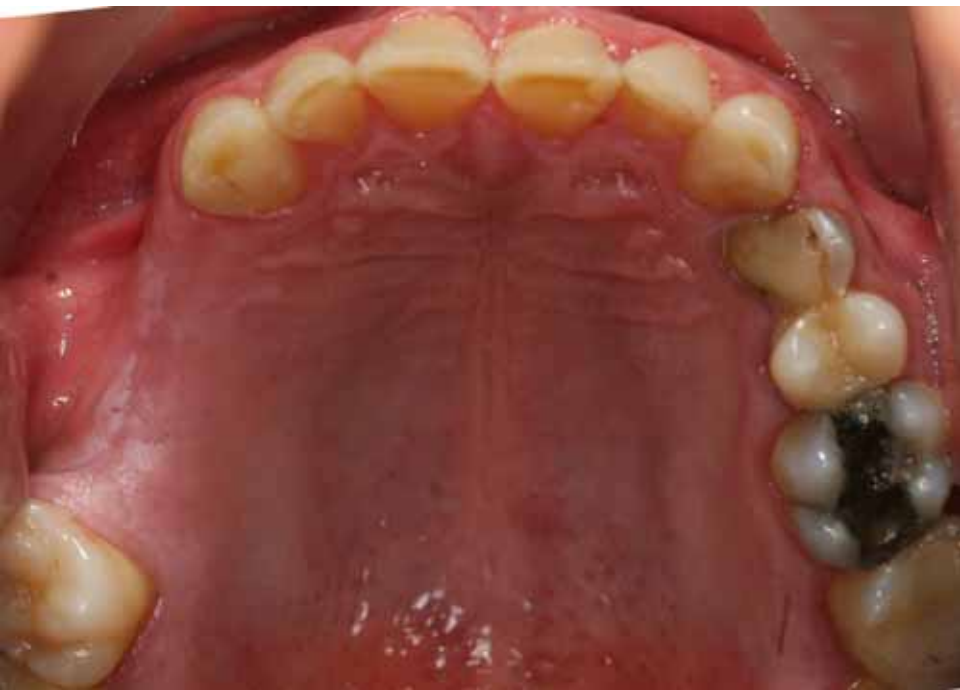
Višina 188cm

Glavna težava: hudo smrčanje
in motnje dihanja v spanju







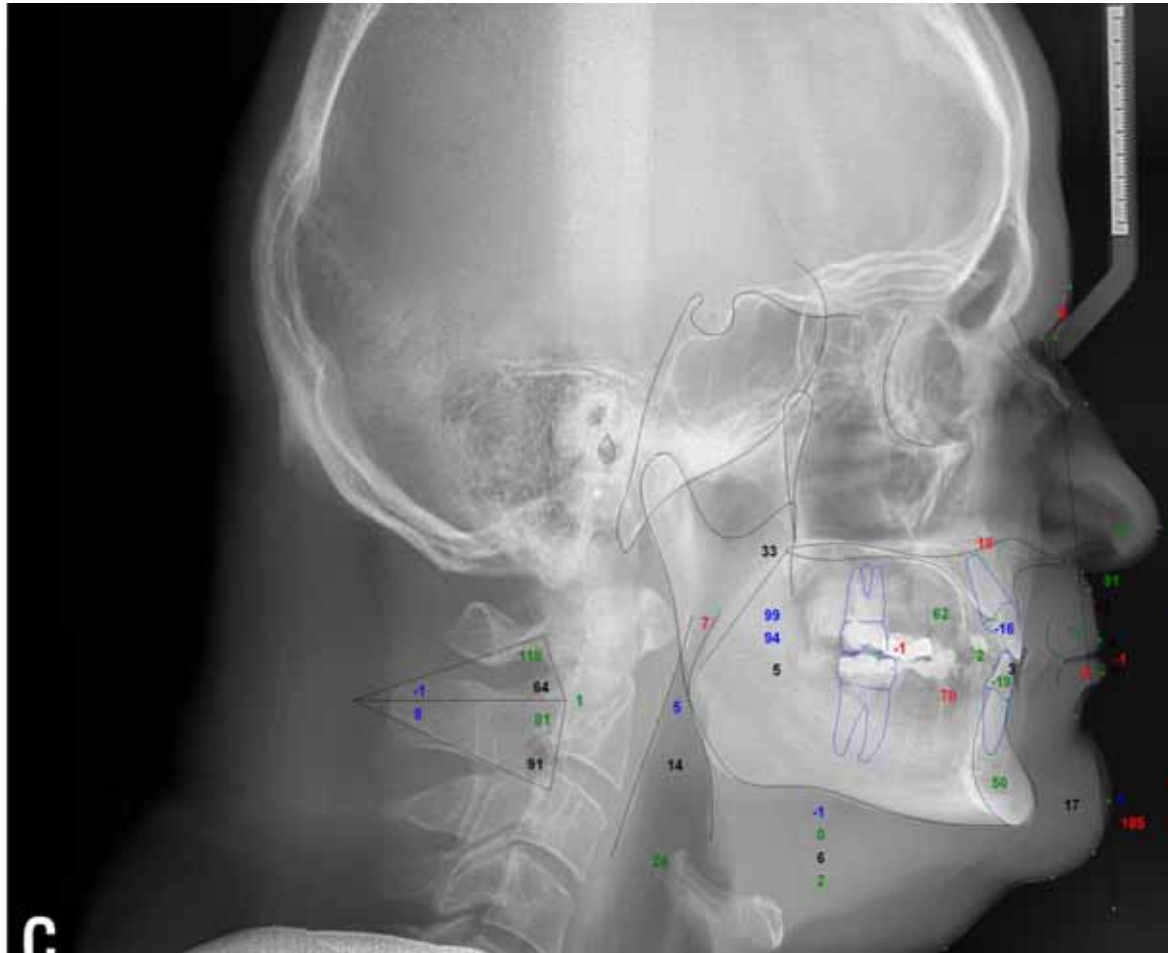




8. AIRWAY

(L small, R large)

soft palate length (PNS to uvula tip) (mm)	33.0	36.6	5.7	-0.6		
nasopharynx airway at A point level (mm)	6.9	17.6	2.6	-4.1	****	
oral pharyngeal airway space at MxI level (mm)		5.3	12.8	3.2	-2.3	**
hypopharynx aiway space at B point level (mm)		16.5	13.9	3.5	0.8	
deep pharynx airway at Pog level (mm)	25.2	16.0	4.4	2.1	**	



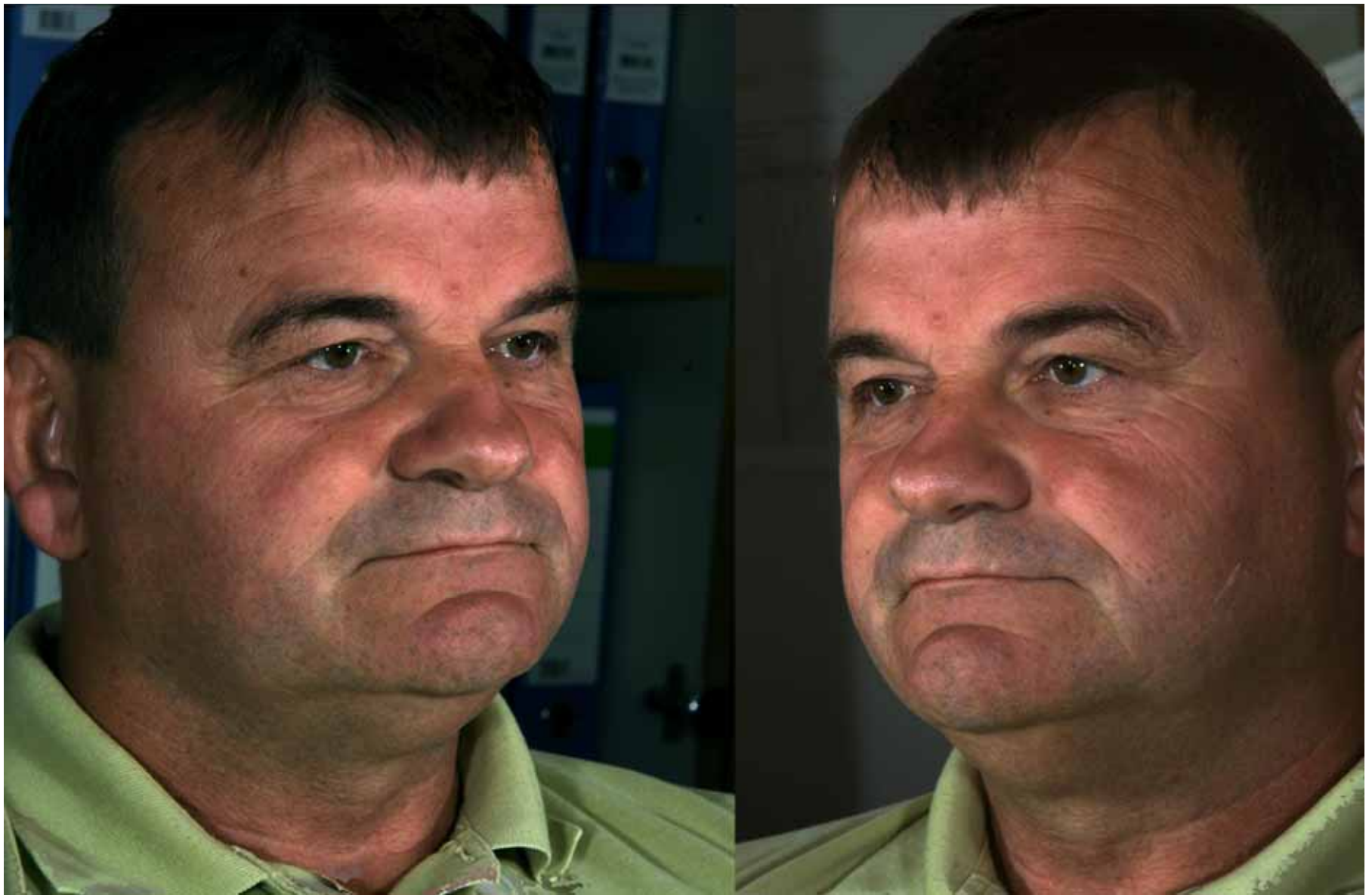


A

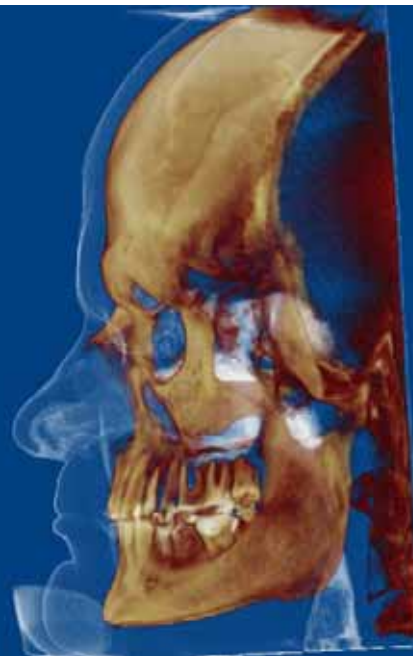
B



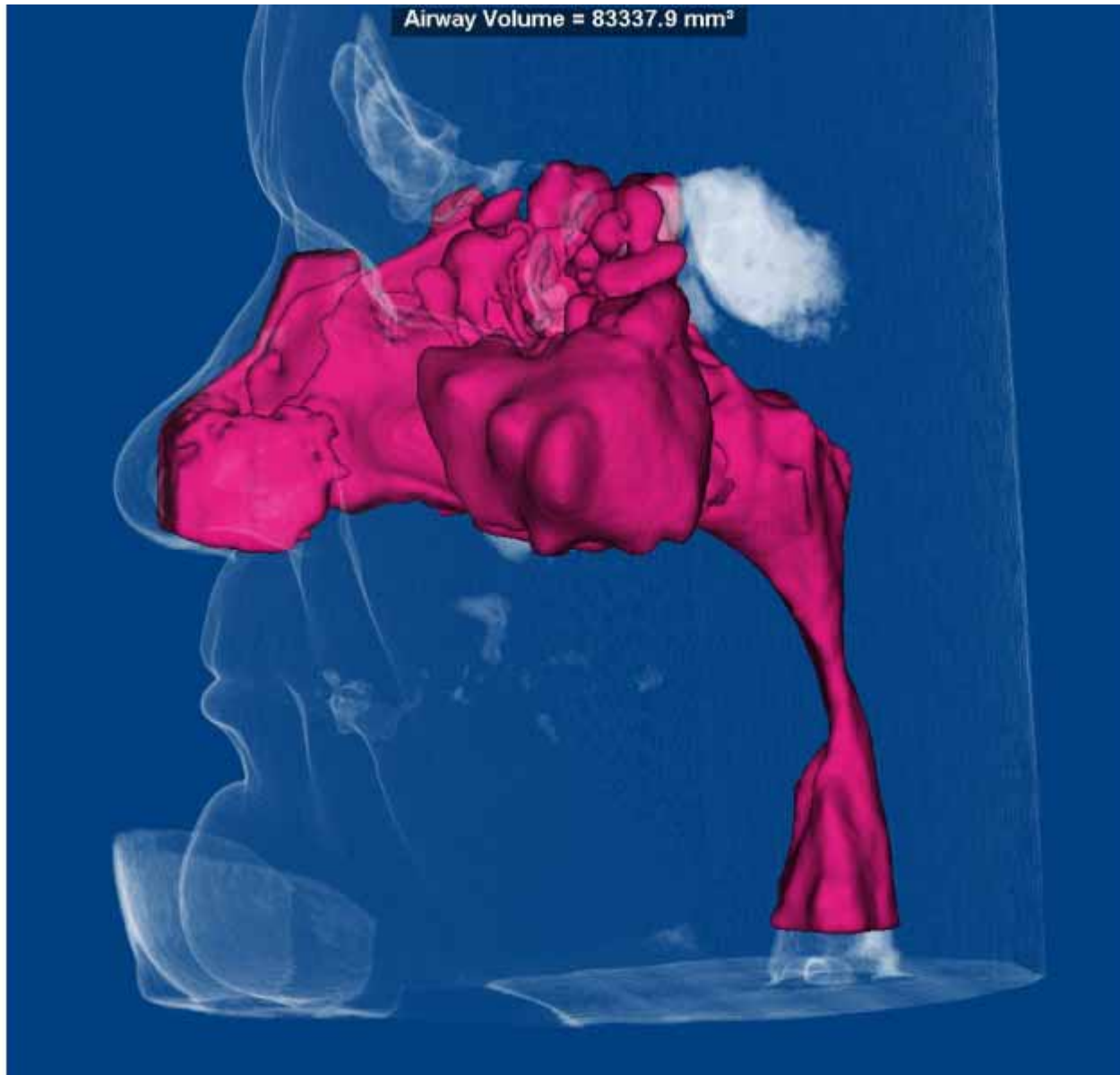




Uroš Mezeg dr. dent. med



Uroš Mezeg dr. dent. med







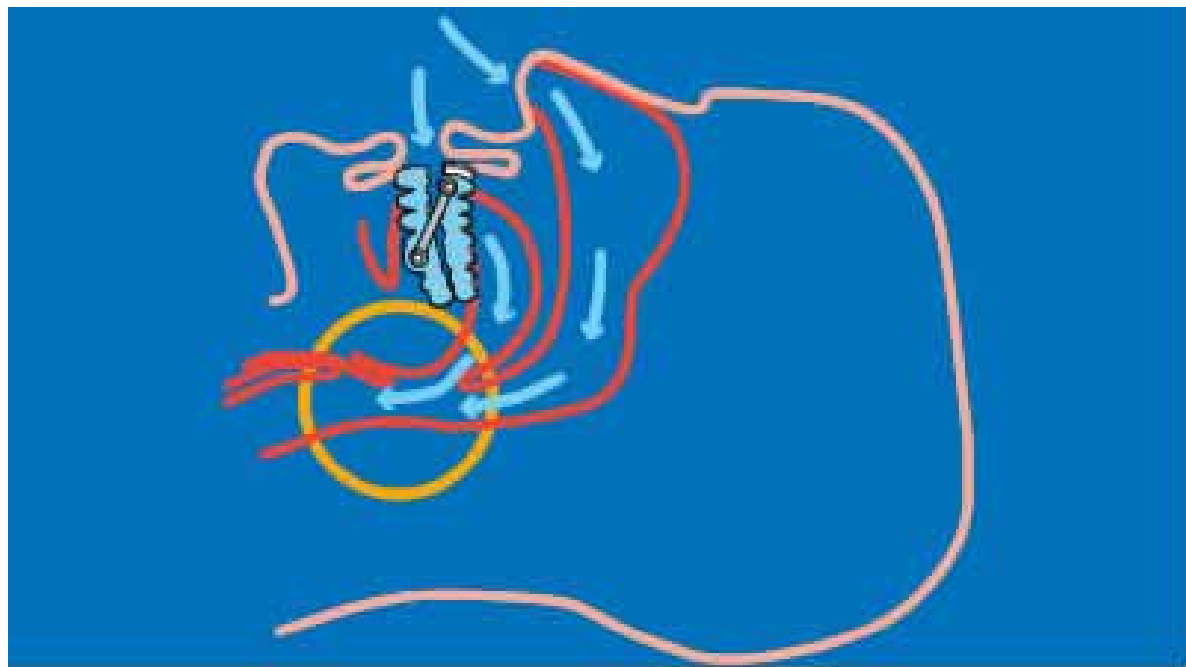
Uroš Mezeg dr. dent. med

Silensor-sl



http://erkodent.de/dental/html_english/silensor.html





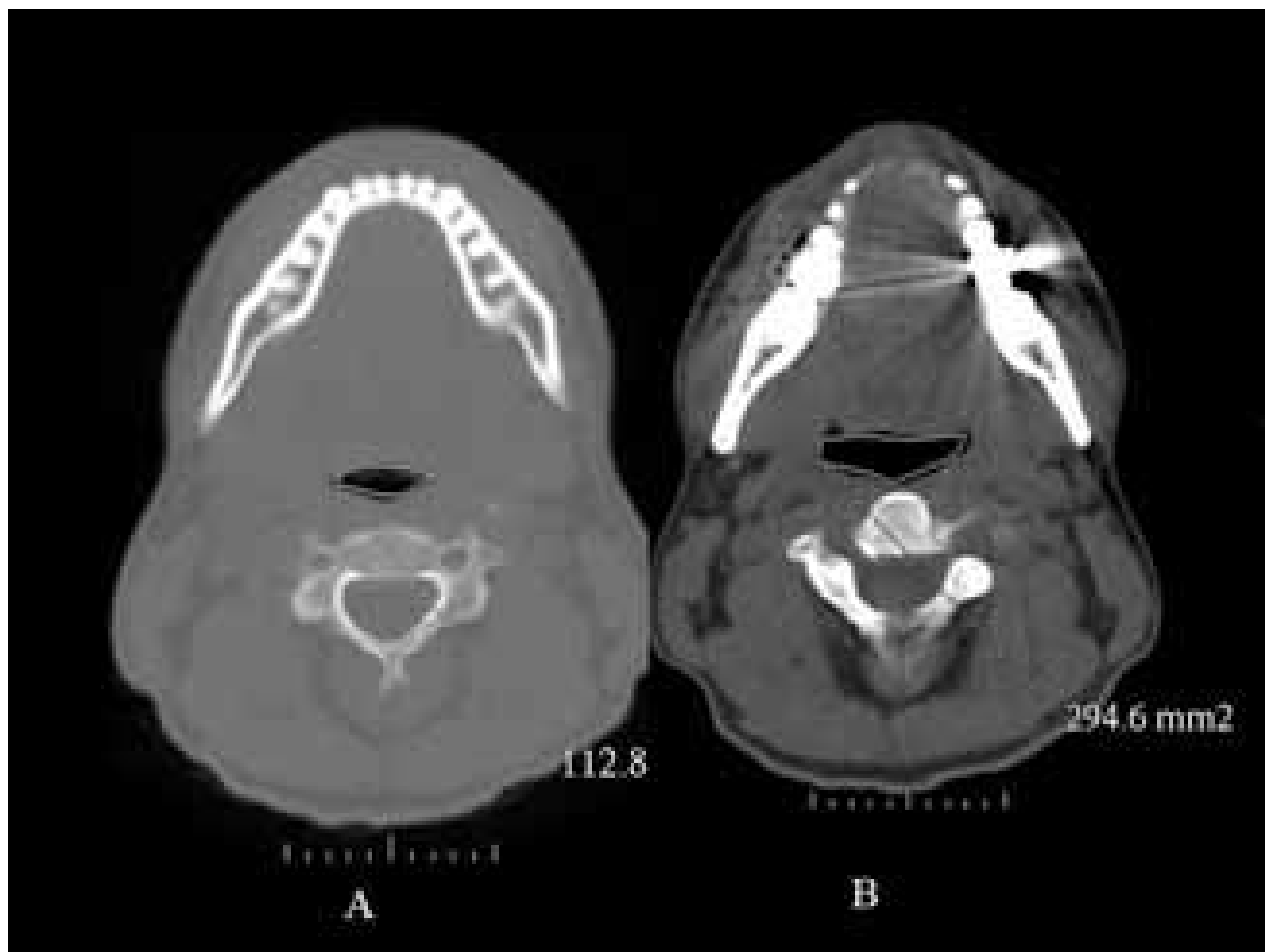


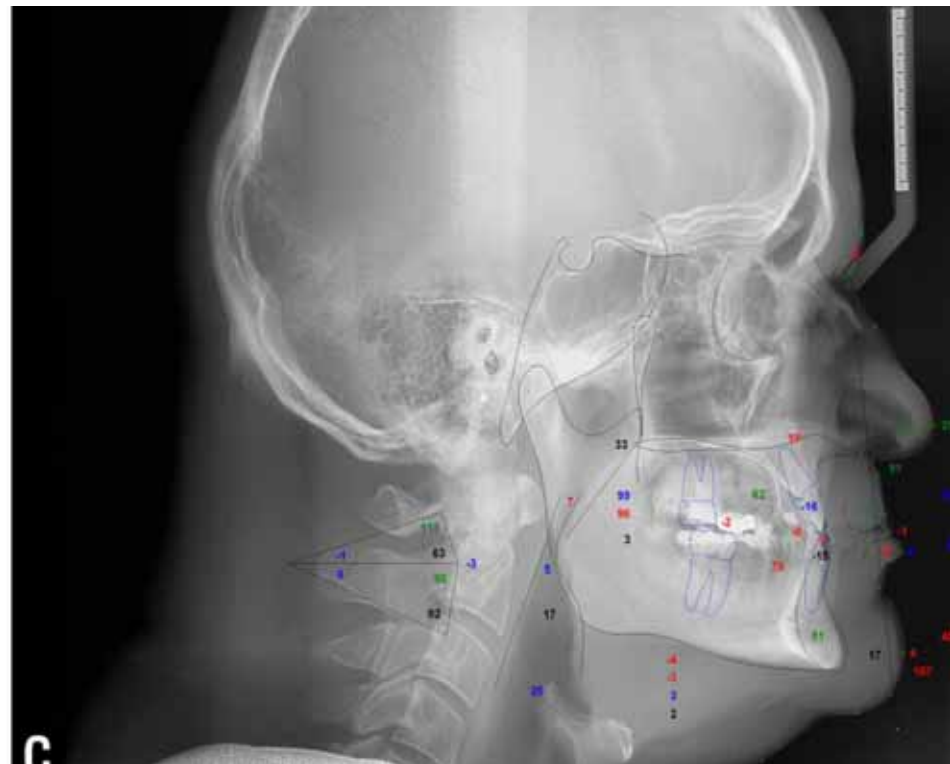
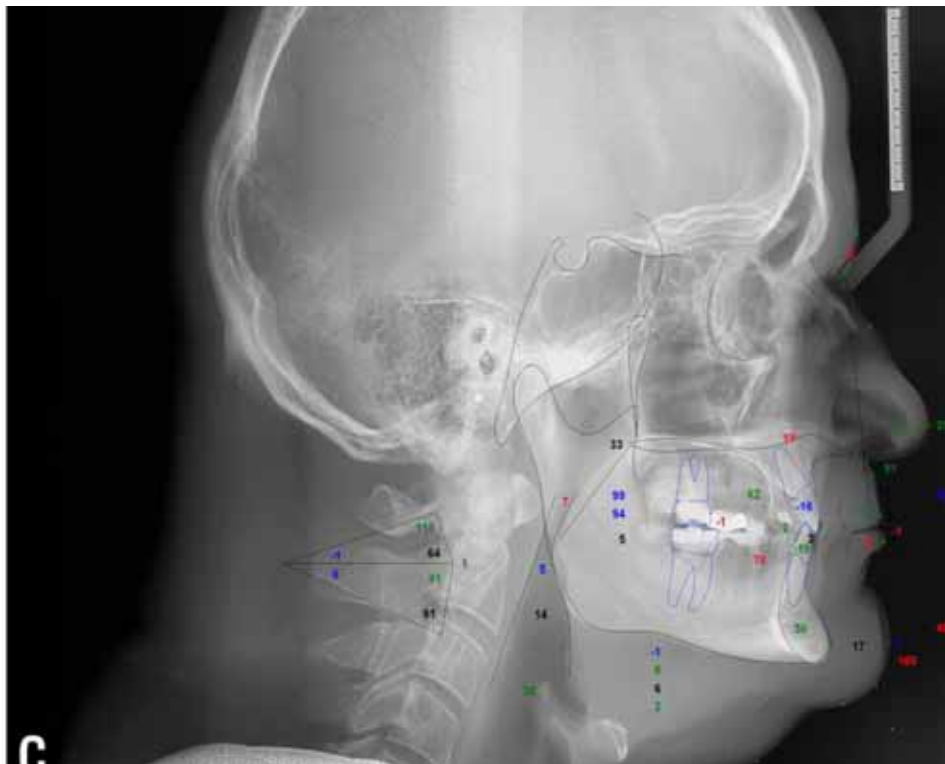
A

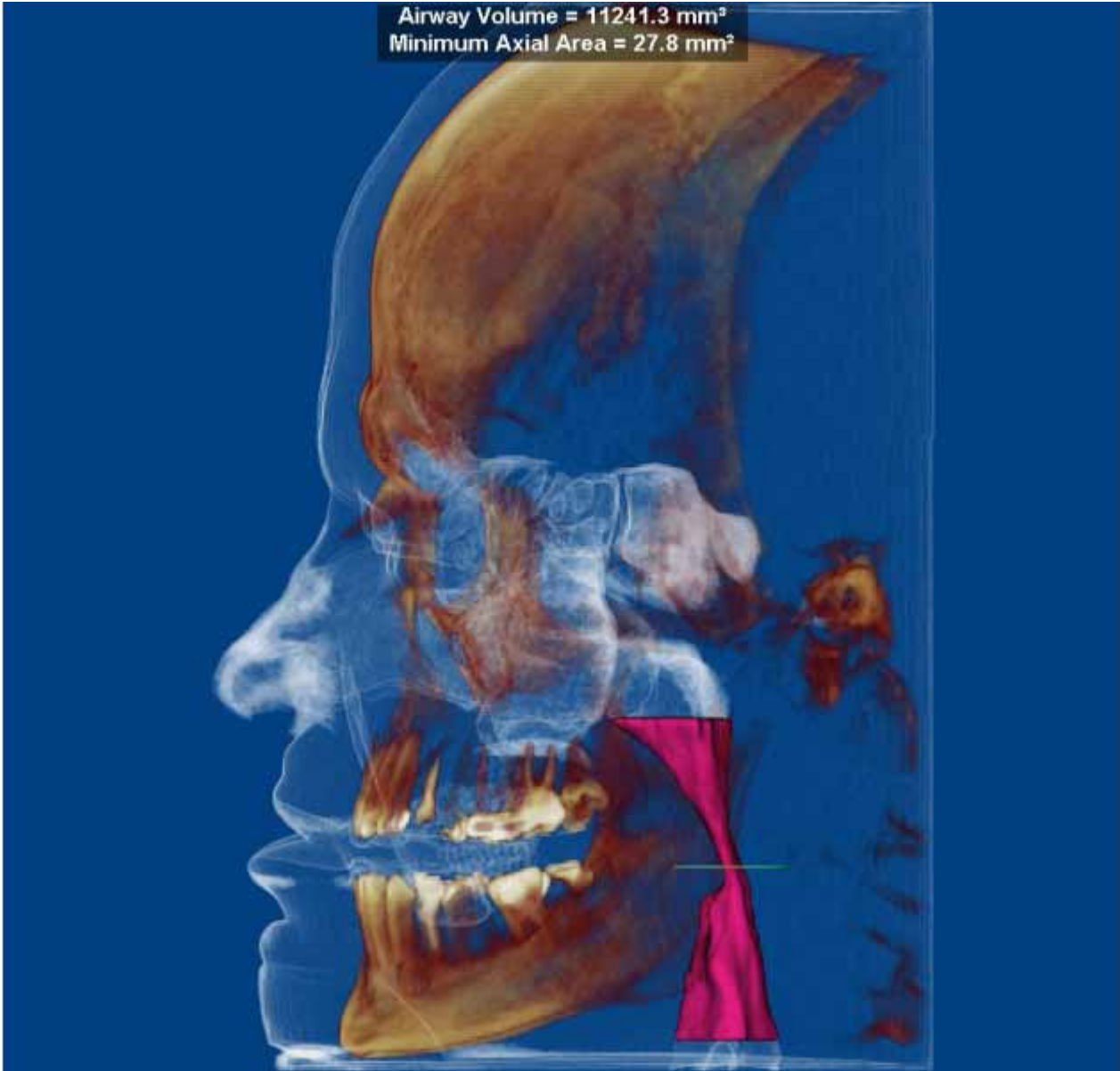


B

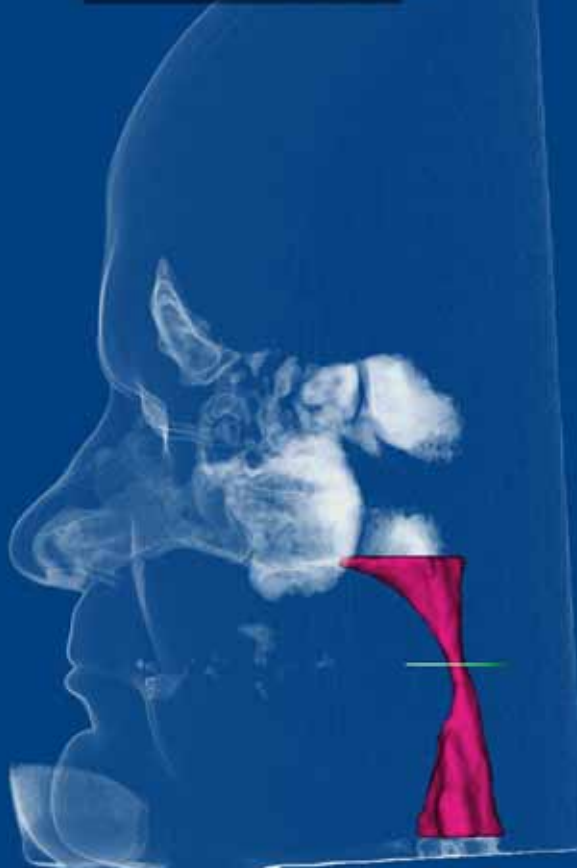




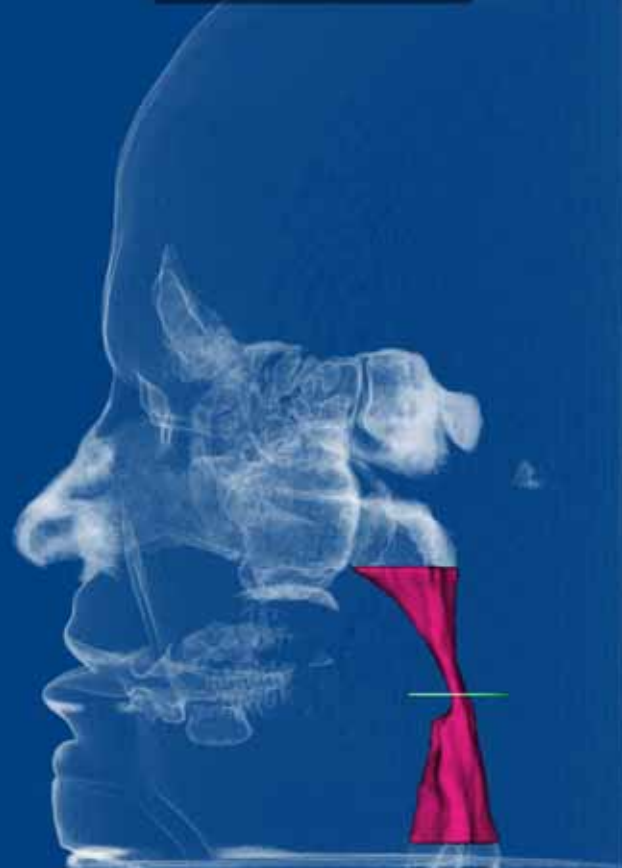




Airway Volume = 12039.2 mm³
Minimum Axial Area = 32.6 mm²



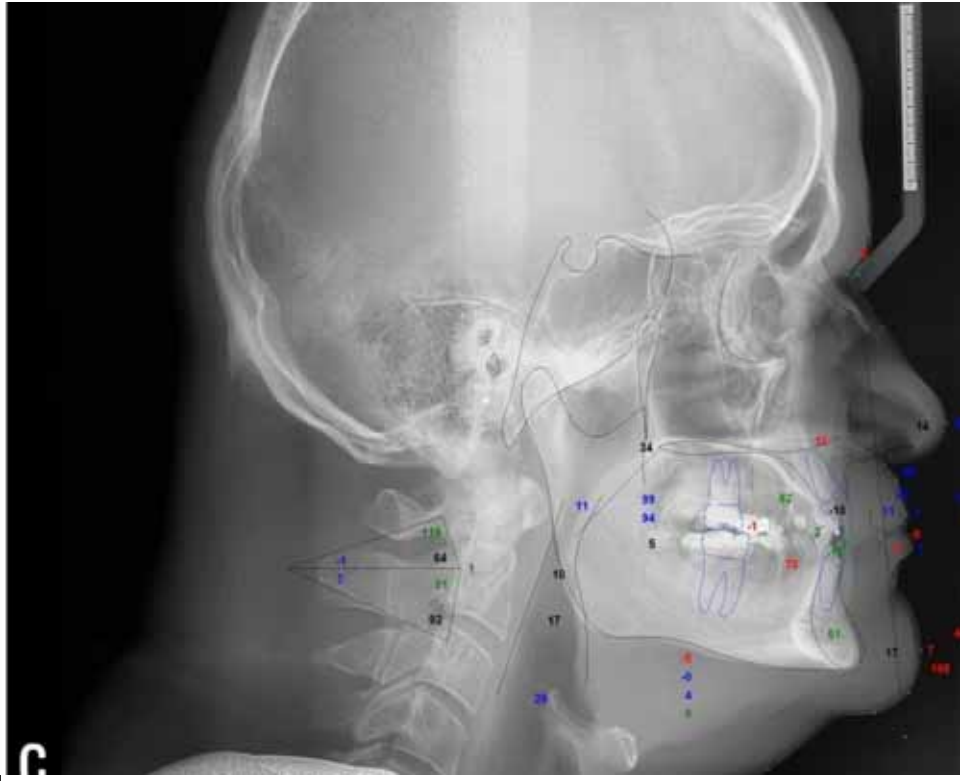
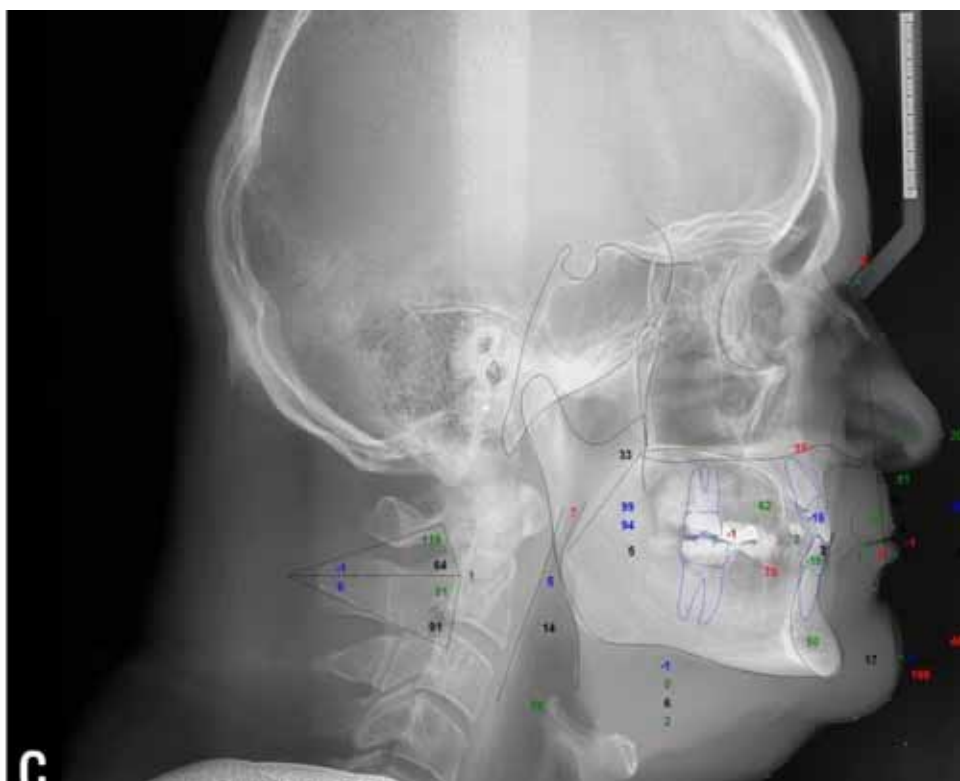
Airway Volume = 11241.3 mm³
Minimum Axial Area = 27.8 mm²





Uroš Mezeg dr. dent. med









Post-Op



Post-Op (Soft Issue)



IZDELAVA SILENSORJA



SILENSORa ®-sl

http://www.erkodent.de/dental/download/sonst/sl_infoEN.pdf



Do you feel stiffness in the area of the temporomandibular (jaw) joints?

Do your facial muscles feel strained or tense in the morning?

Do you grind or clench your teeth?



Do you also snore on the side?

Do you snore every night?

Do you snore noisily?

Do you feel tired on waking up?

Do you sleep fitfully, is your bed crumpled in the morning?

Do you wake up with headache?

Do you have problems concentrating for long periods?

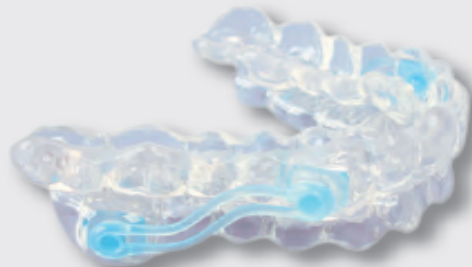
Does sleep suddenly overcome you during the day?

Do you snore noisily with irregular interruptions?

Does your breathing stop (apneas) at any time during sleep?

* body-mass-index:
body weight divided by the
square of the body size:

$$\frac{\text{body weight (kg)}}{\text{body size x body size (m)}}$$



no

sometimes

often

yes

If your dentist confirms these findings a Silensor - SI can be used.

A Silensor - SI can only be used after successful therapy .

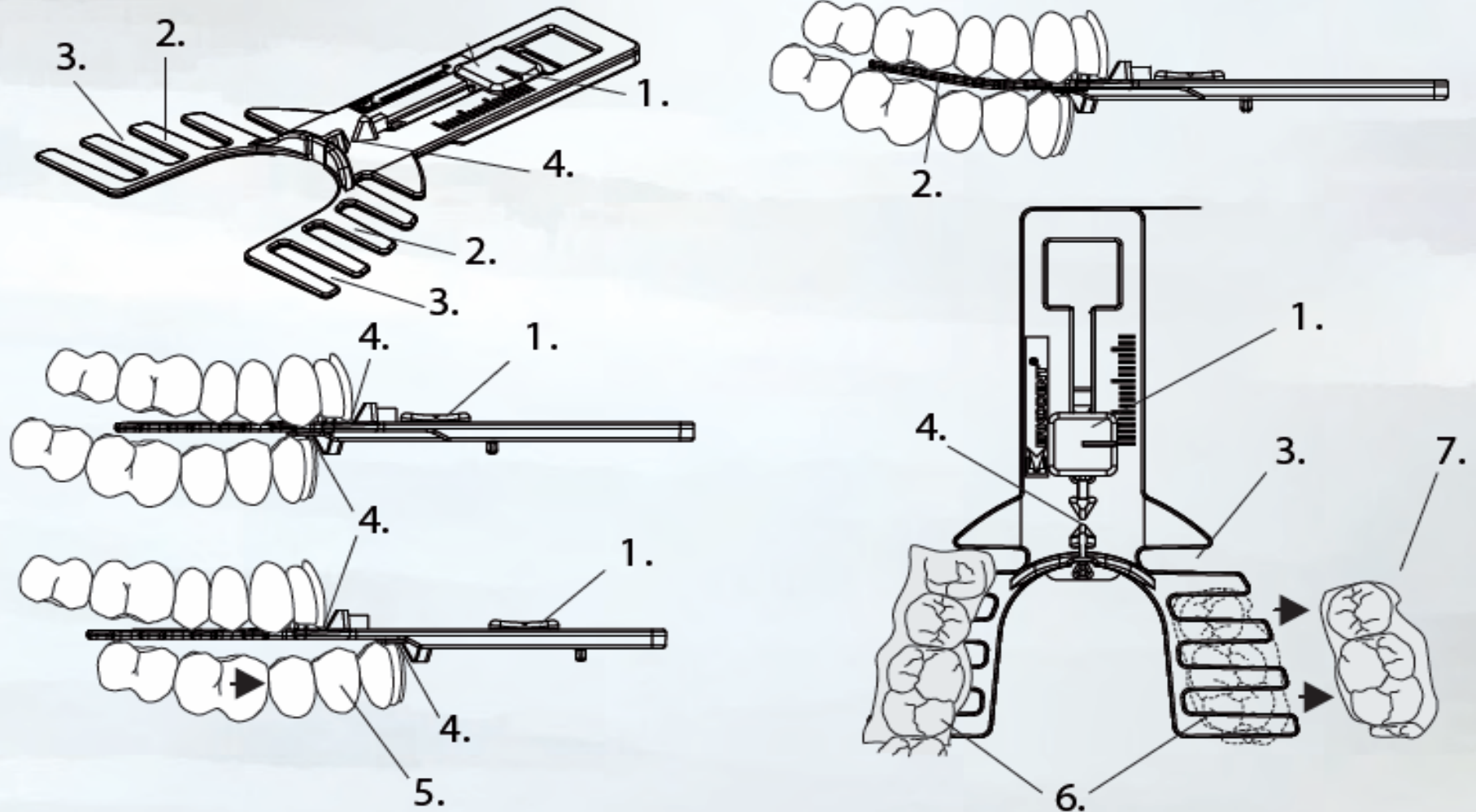
Presumably you only suffer from primary snoring without impairment of your health. The Silensor - SI can be fabricated in the normal bite situation.

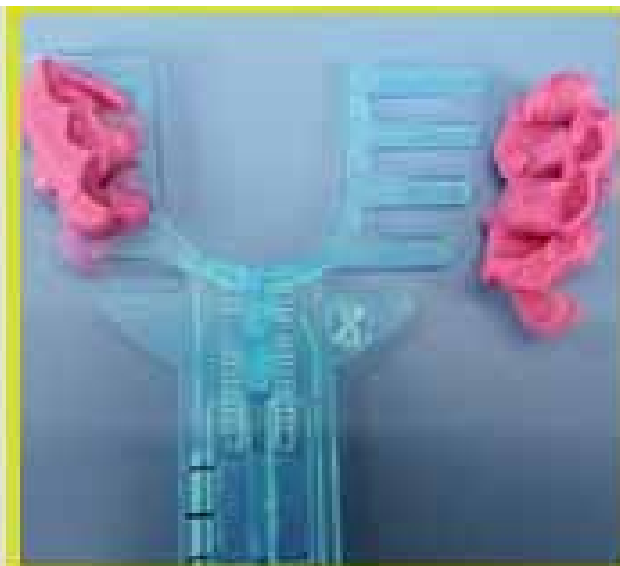
Presumably you suffer from a rhonchopathy or even of an obstructive sleep apnea. The Silensor - SI has to keep your lower jaw in an advanced position.

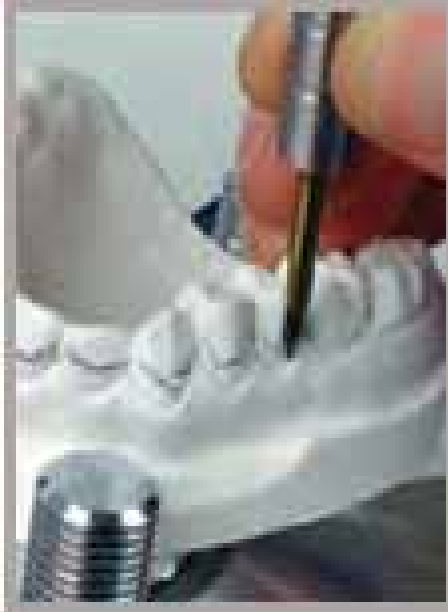
Upon suspicion of a sleep apnea a specialist in sleep medicine has to be additionally consulted.

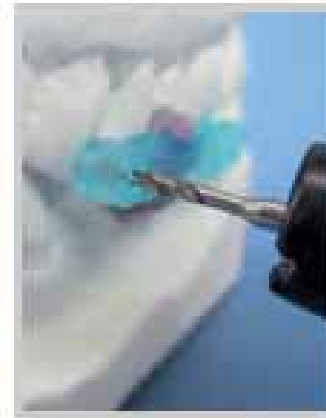
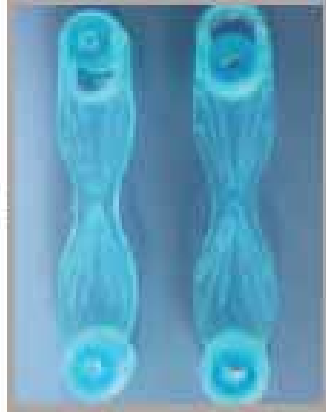


PRIPOMOČEK ZA ODTIDKOVSNJE KONSTRUKCIJSKEGA GRIZA



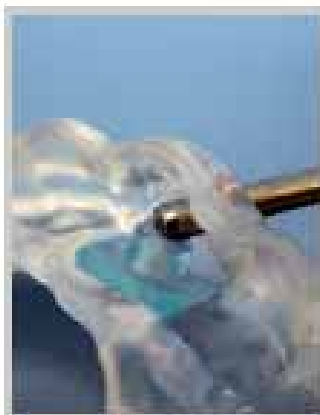


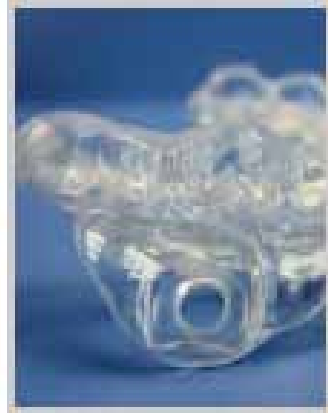














23 mm measured

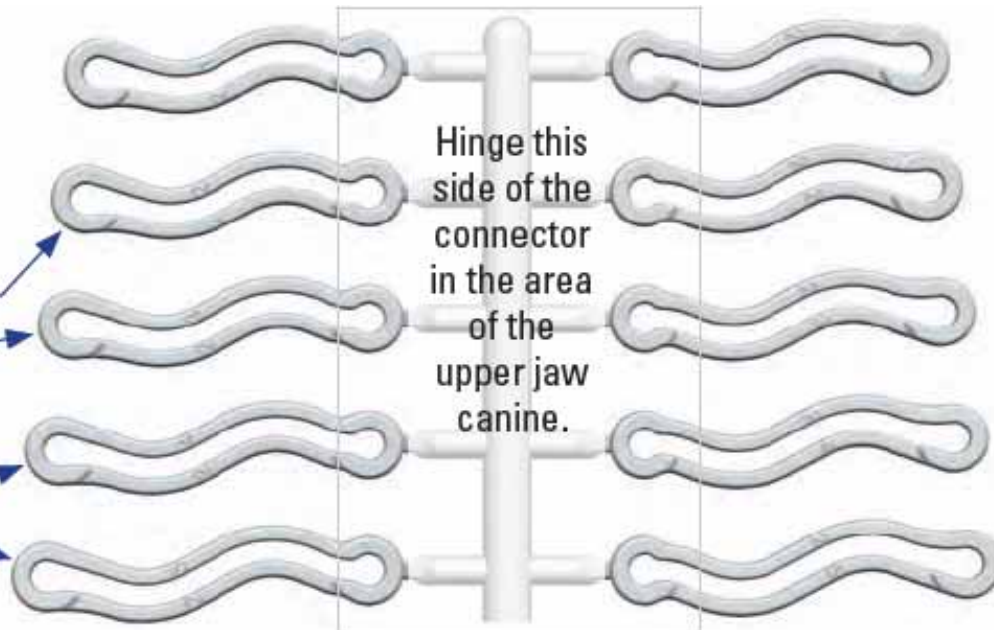
without cb choose 22 mm connector

with cb choose 23 mm connector

25 mm measured

without cb chose 24 mm connector

with cb chose 25 mm connector



Hinge this side of the connector in the area of the upper jaw canine.







Dolphin

Imaging & Management Solutions

Alessandro Manzoli

Authorized Distributor

Scandinavia, Eastern Europe and Switzerland

manzoli@dolphinimaging.info

+39.392.0371.319

fax +39.02.700.43.70.54

Via Crescentino 25 ■ Torino, 10154 ■ ITALY

www.dolphinimaging.com ■ www.dolphinimaging.info

Microsoft
GOLD CERTIFIED
Partner



Uroš Mezeg dr. dent. med

Hvala za pozornost!



Vprašanja so dobrodošla!





beli.medved@telemach .com
www.belimedved.com

